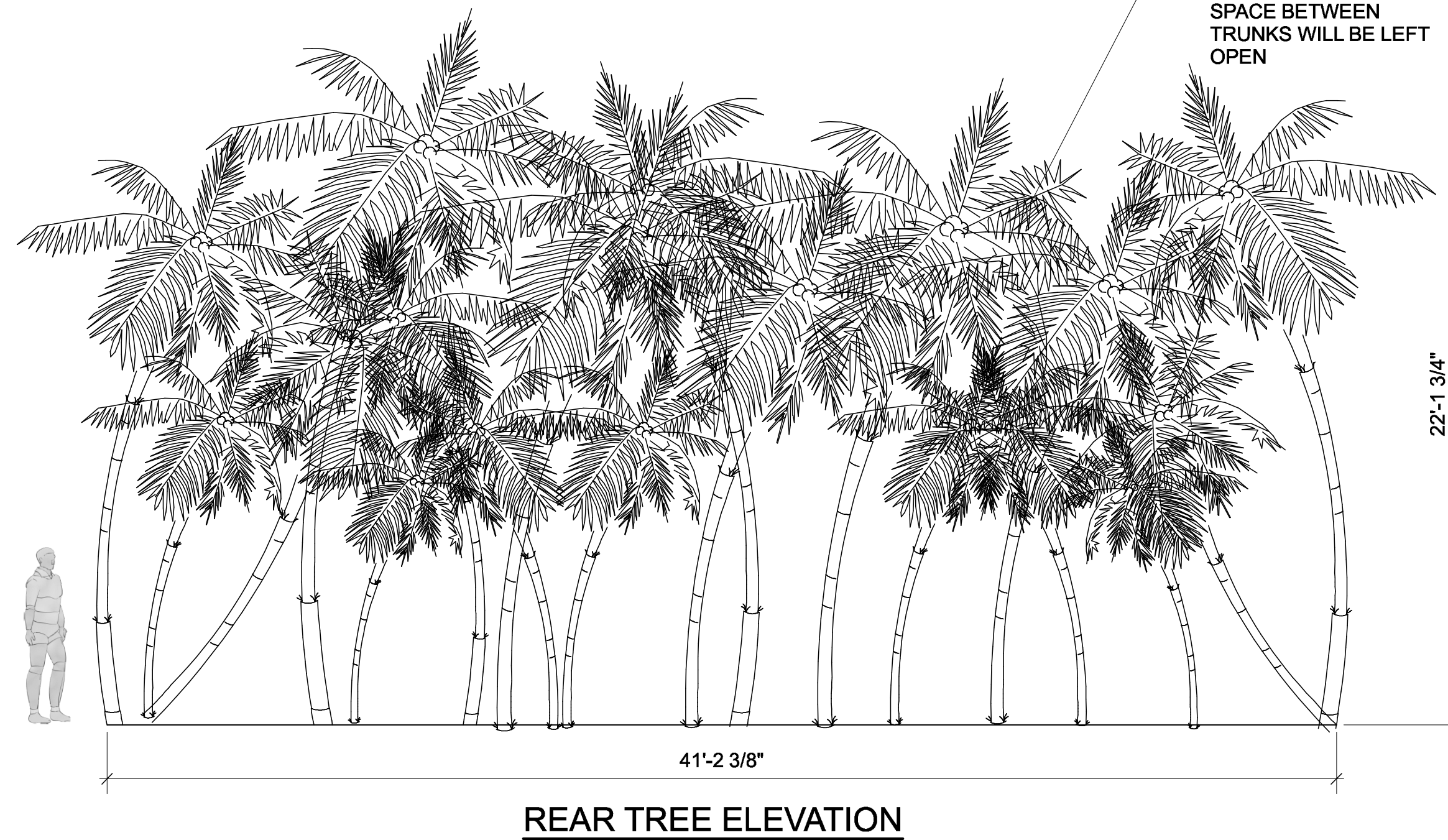
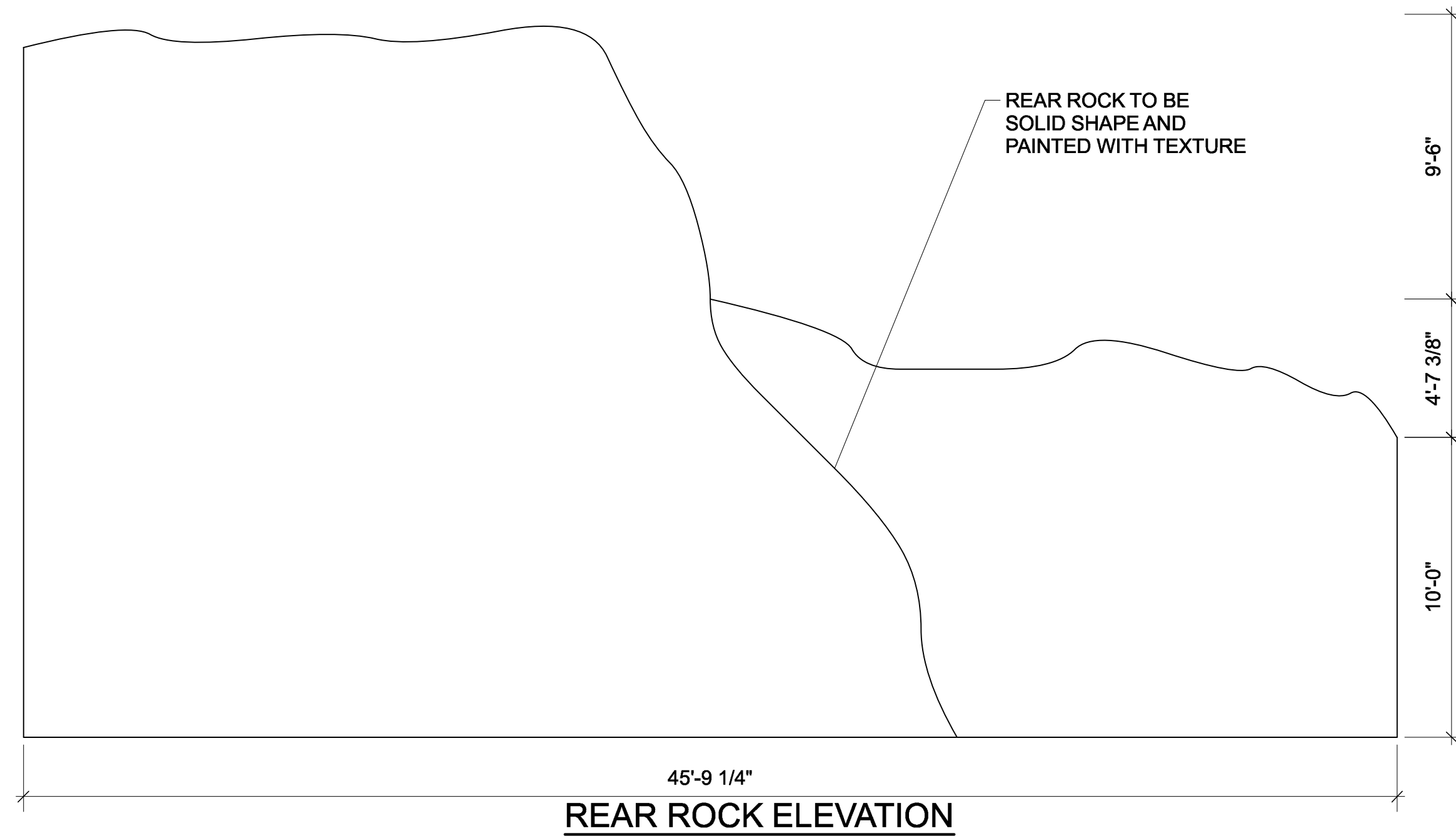
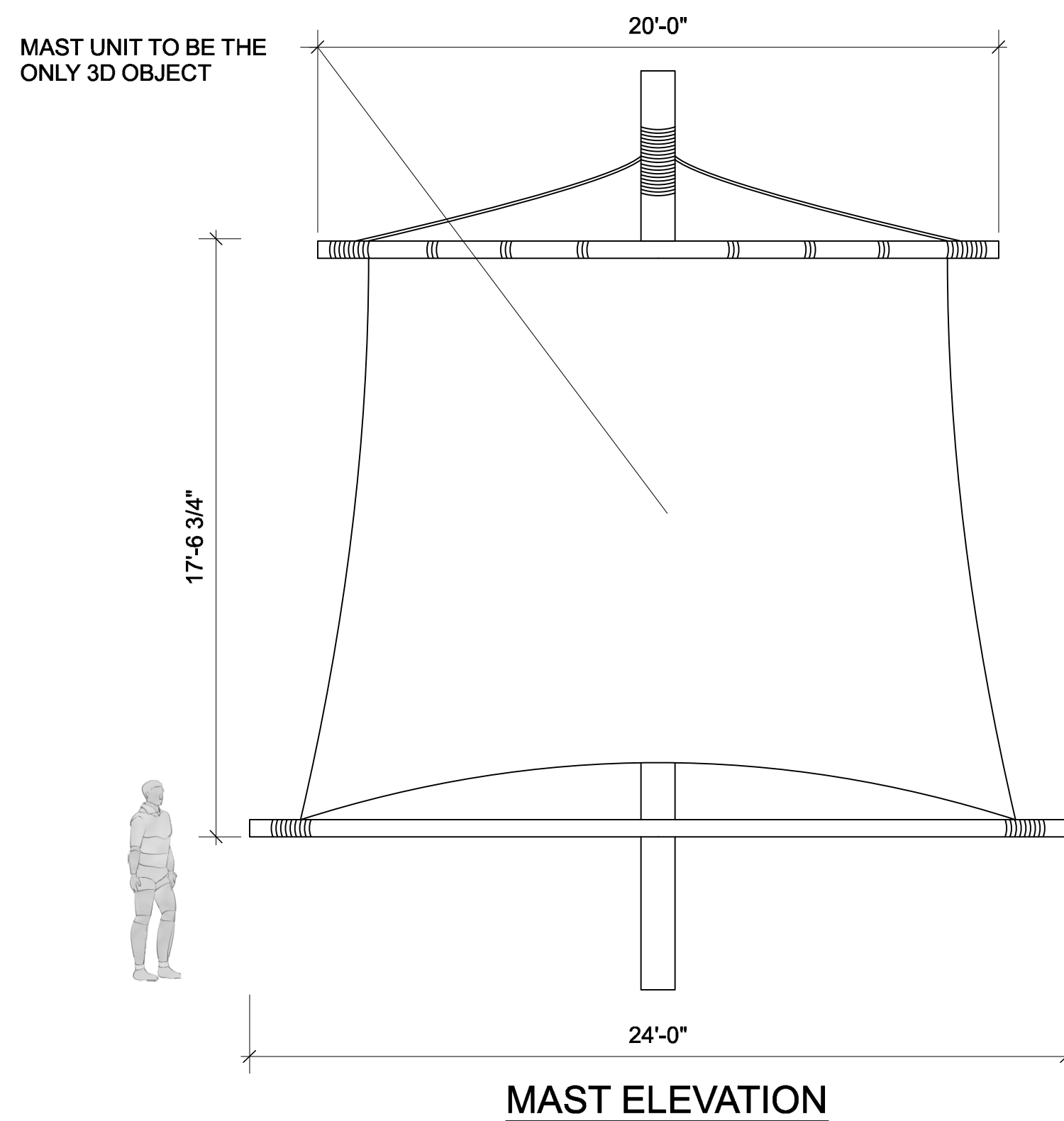
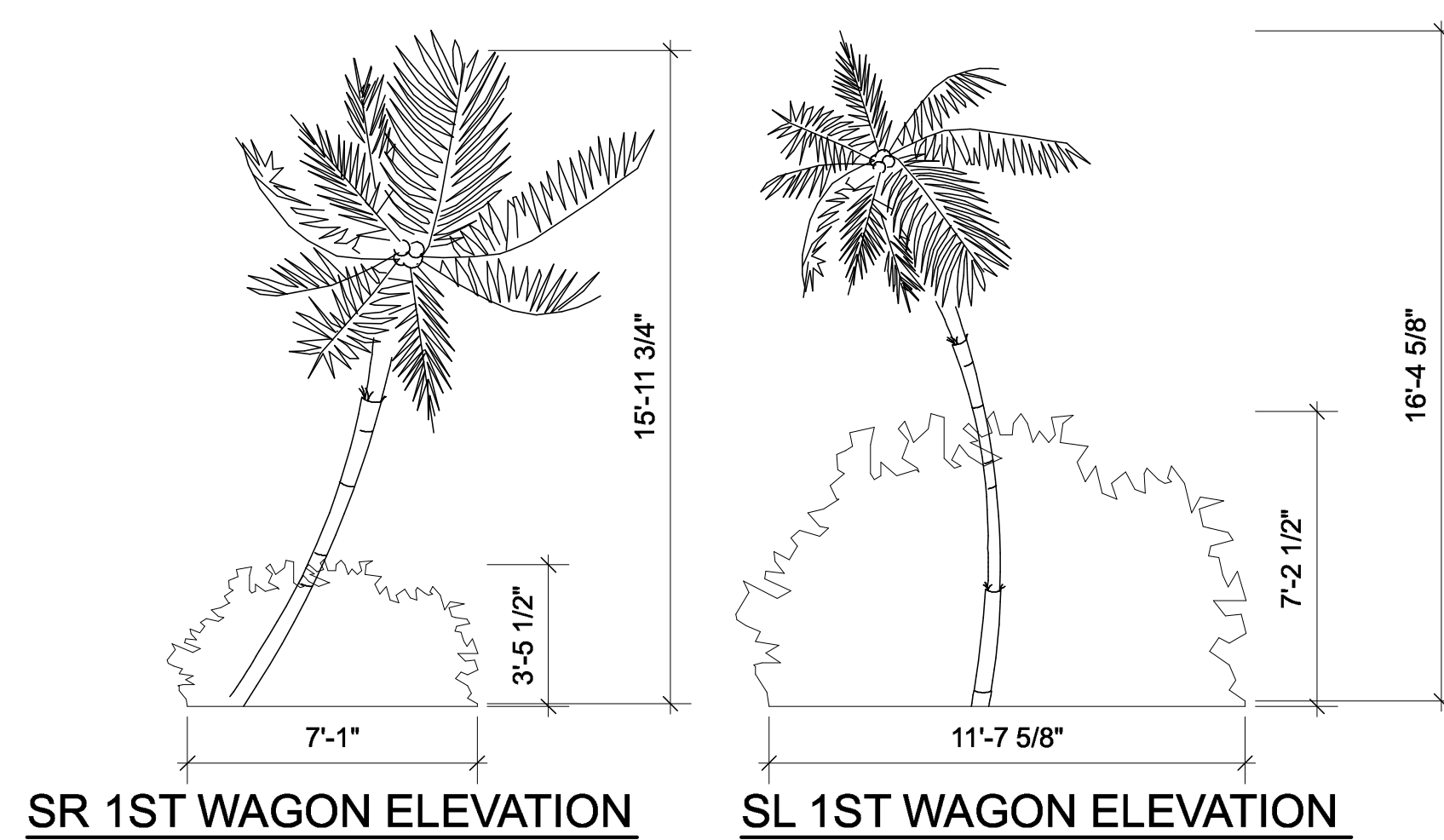
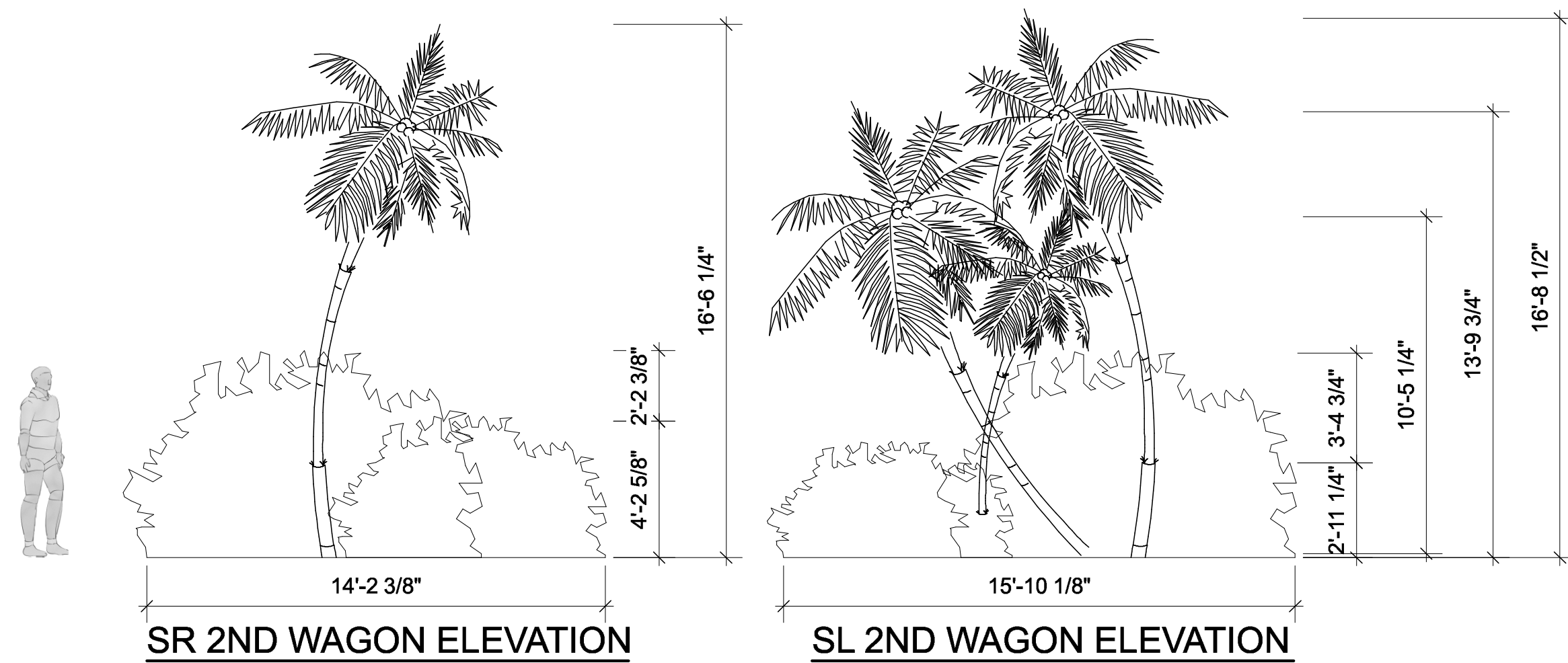
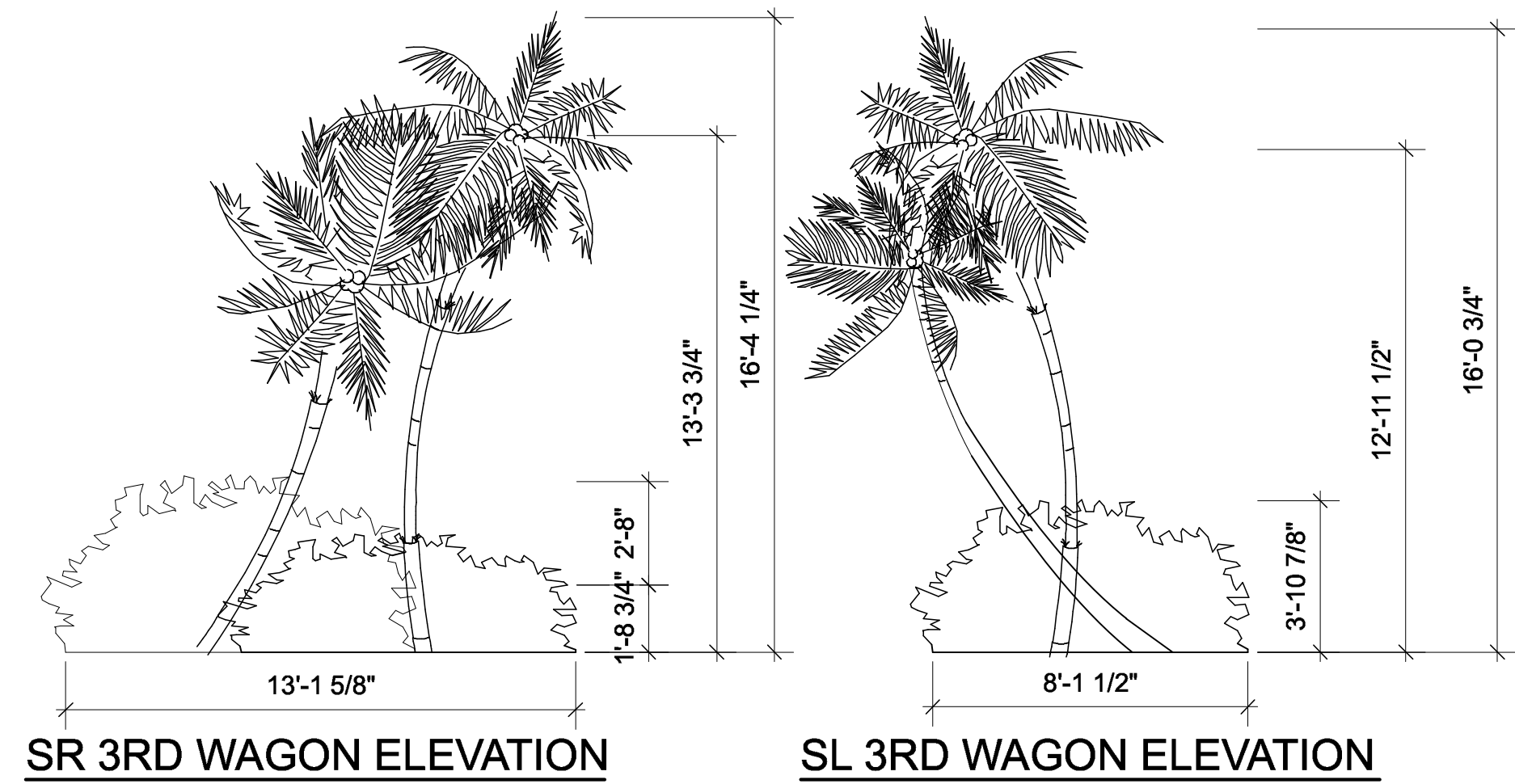
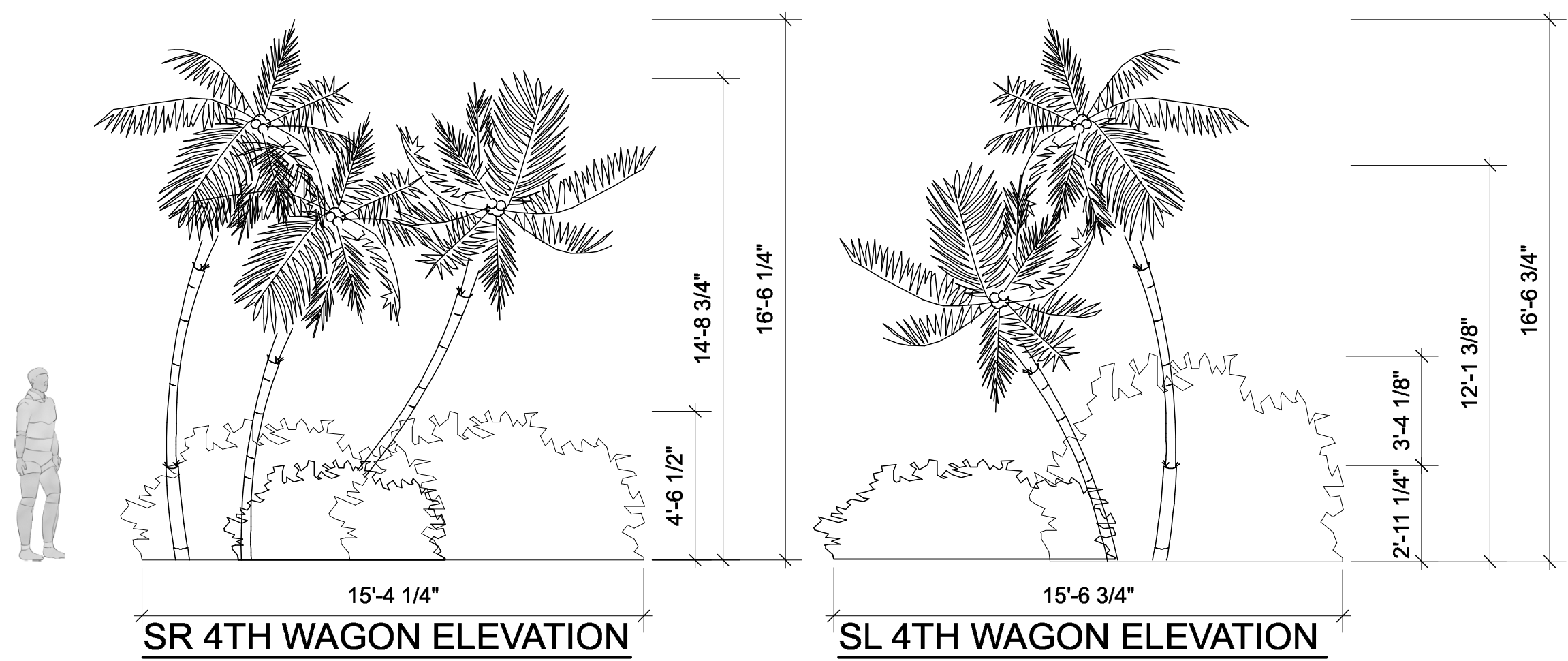


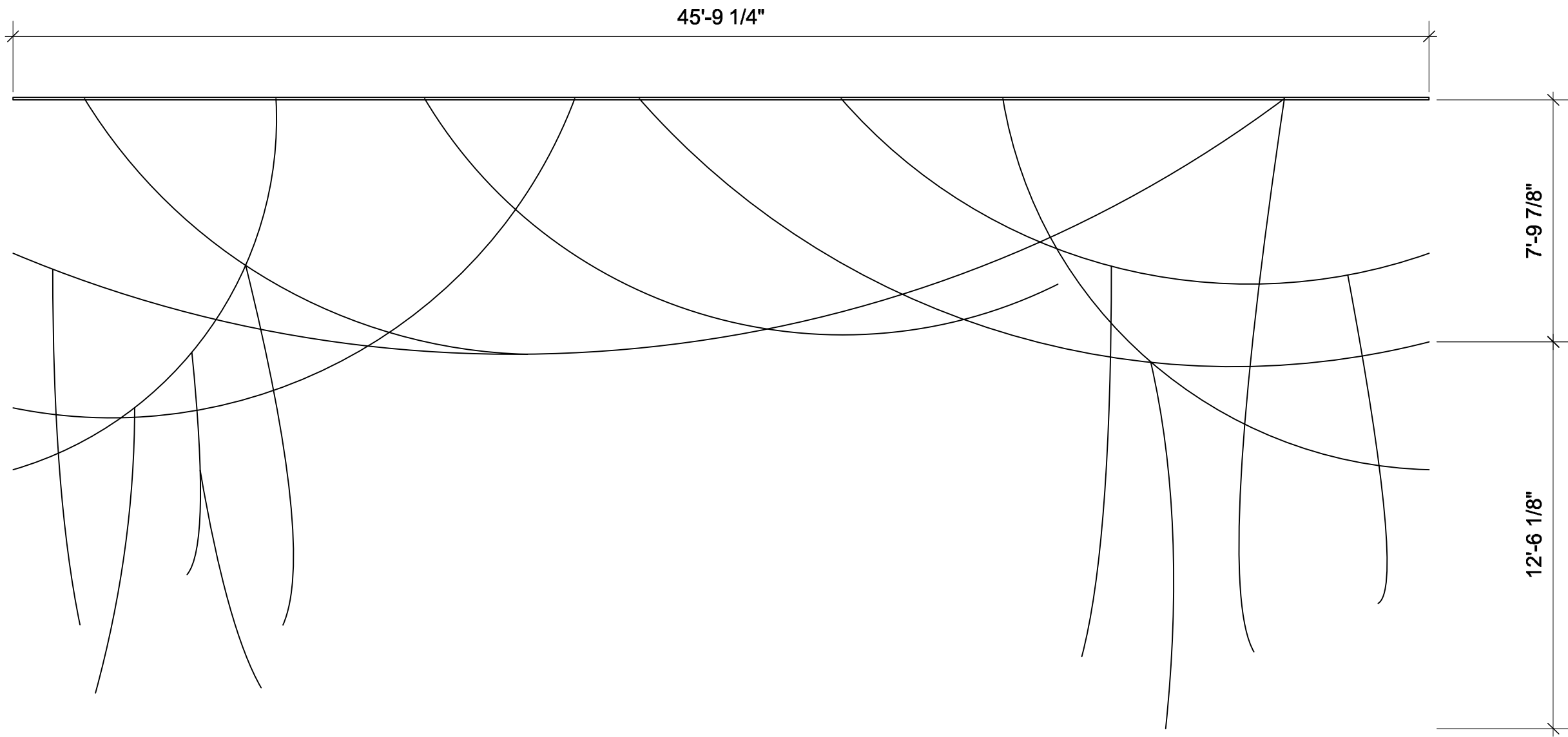


THE UNIVERSITY OF GEORGIA	
THE TEMPEST	
CENTER LINE SECTION	
PROF: JULIE RAY	DWG NO 2 OF 4
DESIGNED BY: SAMANTHA KUCHTA	
DATE: 05-08-2019	
SCALE: 1/4" = 1'-0"	

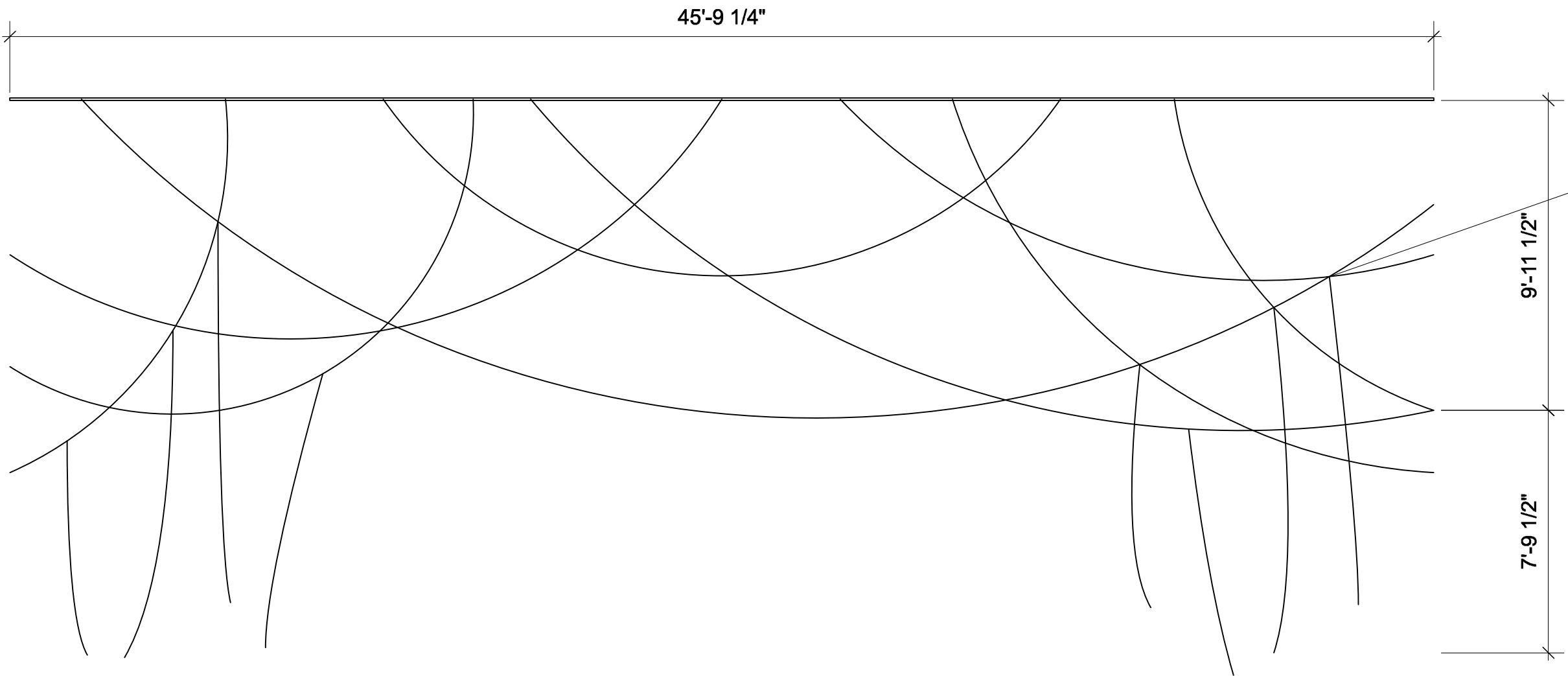


REAR PALM TREES TO HAVE BELOW CUT OUT SHAPE WITH PAINTED PALMS IN SOLID CENTER SECTION. SPACE BETWEEN TRUNKS WILL BE LEFT OPEN

THE UNIVERSITY OF GEORGIA	
THE TEMPEST	
WAGON AND DROP ELEVATIONS	
PROF: JULIE RAY	DWG NO 4 OF 4
DESIGNED BY: SAMANTHA KUCHTA	
DATE: 05-08-2019	
SCALE: 1/4" = 1'-0"	

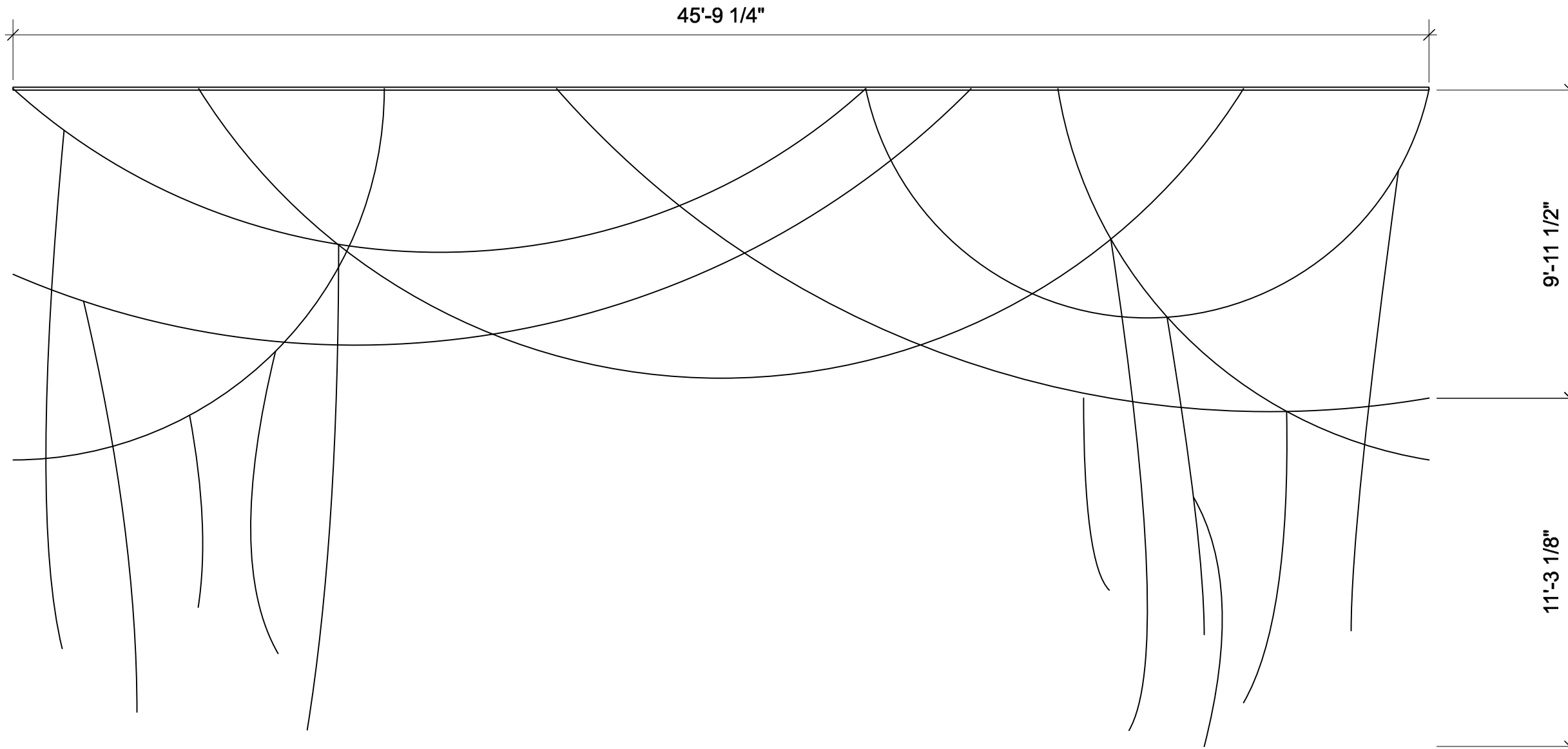


VINE BORDER 1 ELEVATION

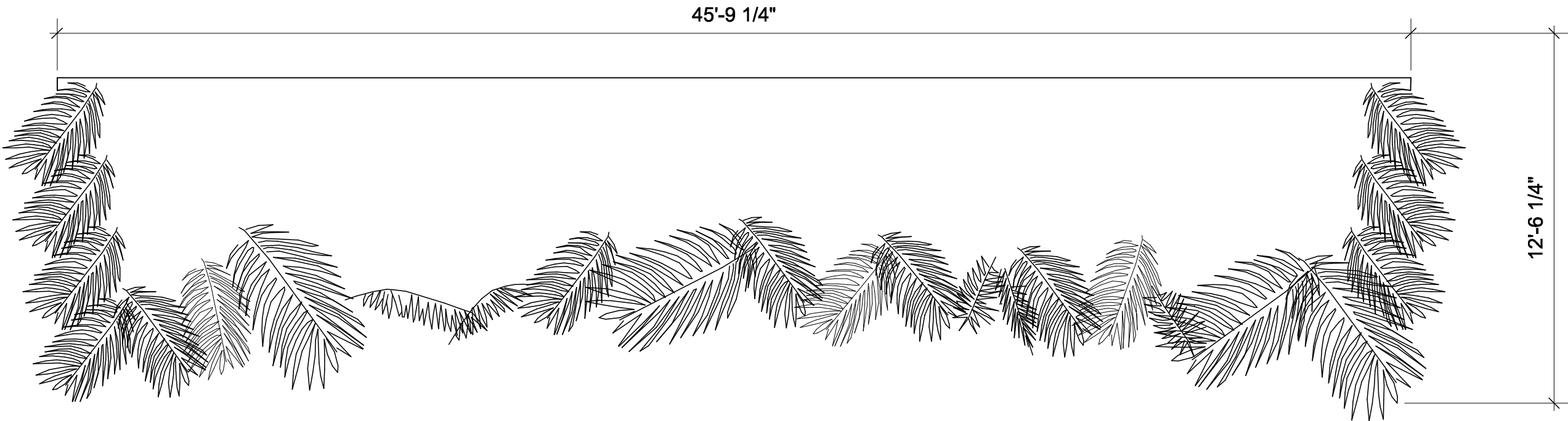


VINE BORDER 2 ELEVATION

ALL VINE BORDERS TO BE CUT OUT 2D SHAPES AND PAINTED

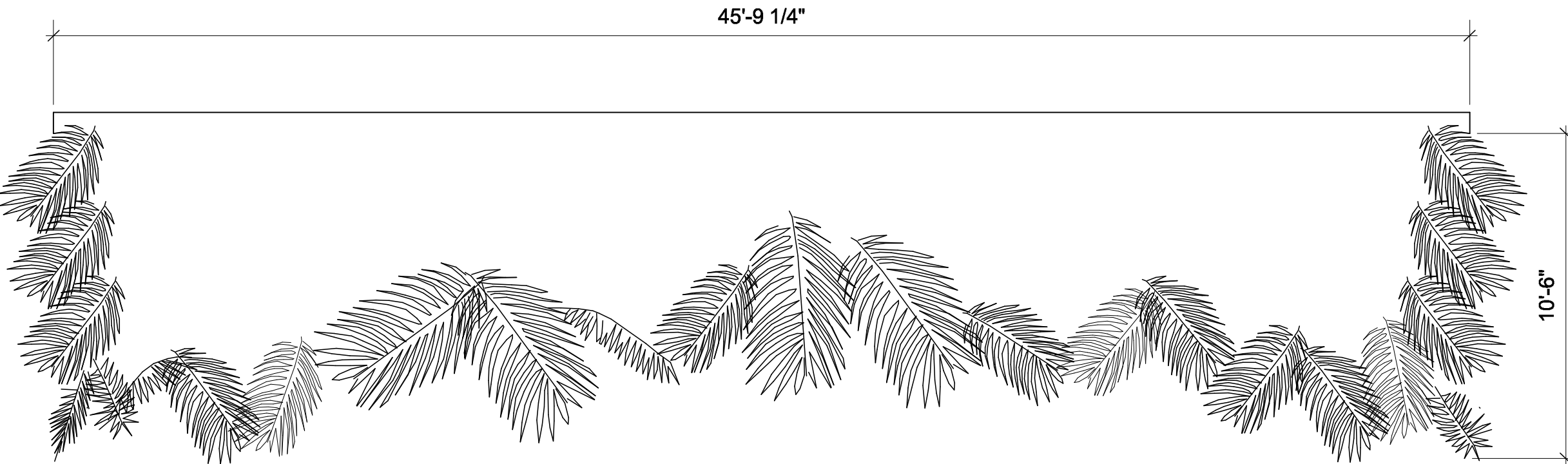


VINE BORDER 3 ELEVATION

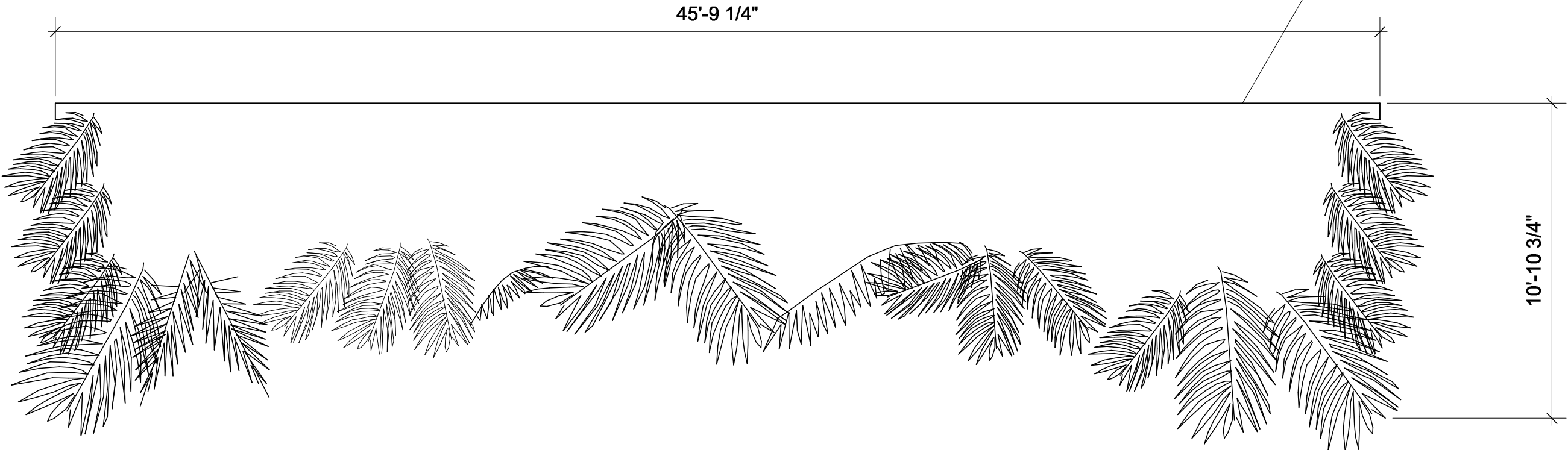


PALM BORDER 1 ELEVATION

PALM BORDERS TO BE CUT OUT PER OUTLINE BELOW. CENTERS WILL BE SOLID, PAINTED TEXTURE PALM



PALM BORDER 2 ELEVATION



PALM BORDER 3 ELEVATION

THE UNIVERSITY OF GEORGIA	
THE TEMPEST	
BORDER ELEVATIONS	
PROF: JULIE RAY	DWG NO 3 OF 4
DESIGNED BY: SAMANTHA KUCHTA	
DATE: 05-08-2019	
SCALE: 1/4" = 1'-0"	